

# The Chesa Bellaria The Luxury Villa with Charm



The Real Alpine Summer & Winter  
Paradise

The Luxury Villa with  
Private Drive way and 22000 sqm

Private Frost Land overlooking

Lake Silvaplana

Switzerland

## Lounge

Chesa Bellaria is the traditional Engadin House of 530 sqm living space

Located approximately ten-minutes' drive from St Moritz and a fifteen-minute drive by car to the private airfield of Samedan.

There are panoramic views over the Valley, ultimate peace and quiet, and lots of daytime sunshine.

Chesa Bellaria has a very warm and cosy design and comes with a few grand touches such as the large winding Staircase with a wrought iron bannister that leads to the first floor. The large fireplace in the living room lends itself to the romantic Alpine evenings by the fire.

A sauna and fitness room keeps you in shape.

It is furnished throughout in a traditional and rustic style, which is typical of the homes in this valley and region.

The House has had an extension built, increasing the living space, a luxury bedroom en suite with a lounge and balcony overlooking the Lake, a small kitchen allowing total privacy.

The house is ideal for a family or a group of friends.

It is also an ideal retreat as a summer location, for the family where all can enjoy the Spectacular Mountain views and the outdoor way of life.

Close by the Lake of Silvaplana it is a paradise for windsurfers and sunbathers.

Hiking and mountain bike, also golf and horseback riding is all nearby.

Chesa Bellaria has the advantage of 22'000 sqm, of land around the house; with a private forest, it makes a perfect playground for the children.



# Bedrooms

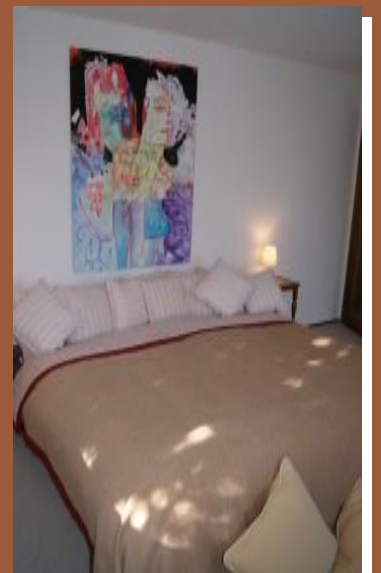
## The Kings Suite

A Newly built extension was finished in the summer of 2011. A lavish and spacious bedroom with Four Poster King-size Bed, lounge and kitchen area, and a spacious bathroom.

Using traditional wood panelling and wooden beams, creating an atmosphere of pure comfort and cosy-alpine feeling. Private balcony overlooking Lake Silvaplana. A private kitchen allows for the ultimate in privacy, separate from the remaining Villa. Perfect for the want to be alone-feeling and be spoiled.

All the remaining Bedrooms are decorated with the traditional furniture's of the region With lots of charm and warmth. From your bedroom windows experience the stunning views over the Valley, and the natural beauty of the Alps, is a pleasure one will never forget.

An adjoining double bedroom on the upper-floor with private shower room makes for the perfect children's room or for the nanny.

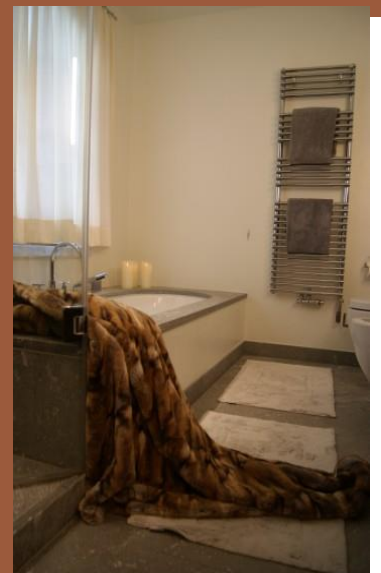




# Bathrooms

The Bathrooms are with very tasteful designer décor, two of the double bedrooms have a private double bathroom, and the three remaining bedrooms have two double bathrooms.

All bathrooms have hairdryers and toiletries. The bathrooms have all have their own style and colours décor with individuals matching bath towels.



# Wellness Sauna & Fitness

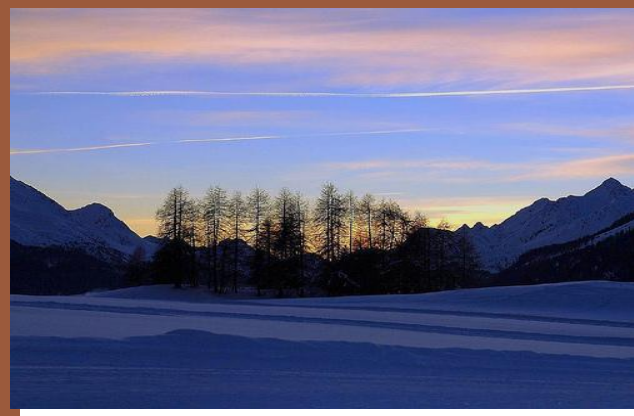
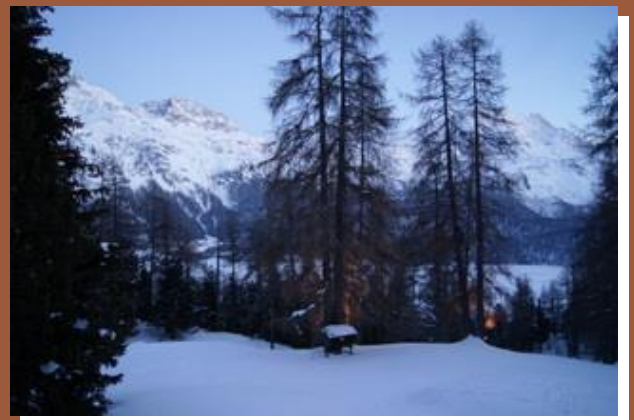
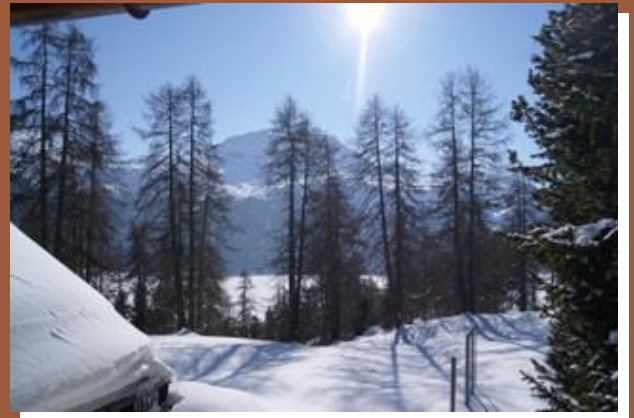
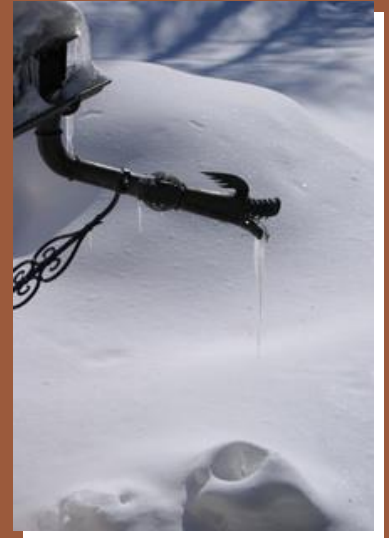
After a hard day Skiing relax in the Sauna  
And if you are really brave dive into the  
meter high snow-pile outside.

Keep in shape with the gym equipment.  
Reserve a private massage, have a full  
manicure in the privacy of your own  
private Villa.





# A View From Your Window





# Location & Activities.



# The Chesa Bellaria

Sleeps 12-17 guests and house staff within 8 Bedrooms.

Have separate staffing quarters and can hosts private parties for up to 24 guests. In Summer Garden Parties for up to 200 persons are possible. Perfect for a Private Get-Together.

Ground Floor: very spacious ground floor, open plan living room with fire-place and dining area, kitchen, 1 staff double bedrooms with bathroom, double garage, 2200 sqm of private grounds with private forest and terrace.

First Floor: 5 Dbl bedrooms and 3 bathrooms, one of the double bedrooms have a French King-size bed.

First Floor Luxury Extension so-called

"The Kings Suite"

Newly built Luxury Double Bed Room with a King-size Four Poster Bed, Spacious Lounge area, Private Balcony overlooking Lake Silvaplana, Spacious Double Bathroom with Large Power Shower and a small kitchen which caters for total privacy.

The Kings Suite is decorated exquisitely, using natural products such as wood panelling and stone, thereby making it the perfect Retreat of Comfort and Relaxation.

Top Floor: large bedroom with 3 single beds for staff or children, shower room.

Facilities:

HiFi, TV, Internet, 190 mt Private driveway, Private Parking, Garage, Alarm System, Garden with remote outdoor lighting, also in the trees, 2200 sqm Private Forest Land, Gym Room, Sauna, Relaxing Room, Cold Plunge, Laundry room,

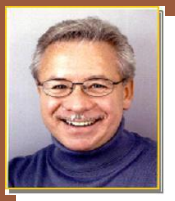




# The Chesa Bellaria is the Real Alpine Paradise

For more information with regards to reservation of the  
Winter or Summer season.  
Please contact.

Christopher directly.



Christopher Kenneth. Gordon  
Proprietor & Owner of  
The Butler & Gordon

## The Butler & Gordon



Corporate Entertaining & Events Management  
The Ultimate in Fine Cuisine & Private Butler Services

For a personal consultation contact  
Christopher Gordon  
Beerenbachweg 6  
8555 Müllheim Dorf  
Switzerland

Tel: 0041 (0) 52 763 37 86: Fax: 0041 (0) 52 765 37 45: Mobil: 079 544 33 05

E-mail: [thebutler@bluewin.ch](mailto:thebutler@bluewin.ch) : [www.thebutlergordon.com](http://www.thebutlergordon.com) [www.butlerandgordon.com](http://www.butlerandgordon.com)

Here are just some of the fine establishments with which Christopher Gordon has been involved with over the years.

## The Butler & Gordon INNOVATIVE Service Provider

